



THE MUD STOPS HERE

YOUR ENVIRONMENTAL TRACKOUT SOLUTION



WWW.GETFODS.COM
(303) 395-1069
INFO@GETFODS.COM

TOLL FREE

1-844-200-3637



98 Inverness Dr E #350
Englewood, CO 80112

ABOUT FODS

FODS are an innovative and convenient new product that solves a major problem associated with our environment, and has great economical benefit to the customer! FODS effectively removes mud and sediment from vehicle tires. Whenever a vehicle needs to enter a paved road from an unpaved site, FODS is your answer! Learn more about FODS at

www.GetFODS.com

FODS MATS OFFER SUPERIOR BENEFITS:

- Creates an instant construction entrance over virtually any type of surface including asphalt, concrete, turf, sand, mud, even ground, uneven ground, and similar
- Will not get clogged, be an eyesore, become embedded in soft ground
- Protects ground when placed on top of surface unlike conventional SCE's (Stabilized Construction Entrance)
- Easily transported from site to site
- Creates an easily recognizable entrance for vehicles to see day or night

- Superior alternative to rocks, shakers, steel plates
- Supports weights up to 80 tons
- Chemically resistant to acids, oils, break fluid, etc.
- Easily cleaned and put back in service within minutes
- Made in the USA
- Easily stored when not being used
- 15 times more abrasion resistant than steel
- Years of reusable performance
- 100% recyclable

FODS IS YOUR ENVIRONMENTAL SOLUTION

Ideal for construction, airports, government, military, mining, agriculture, forestry, renewable energy, oil and gas, telecommunications, national parks, storm water, roads and bridges.

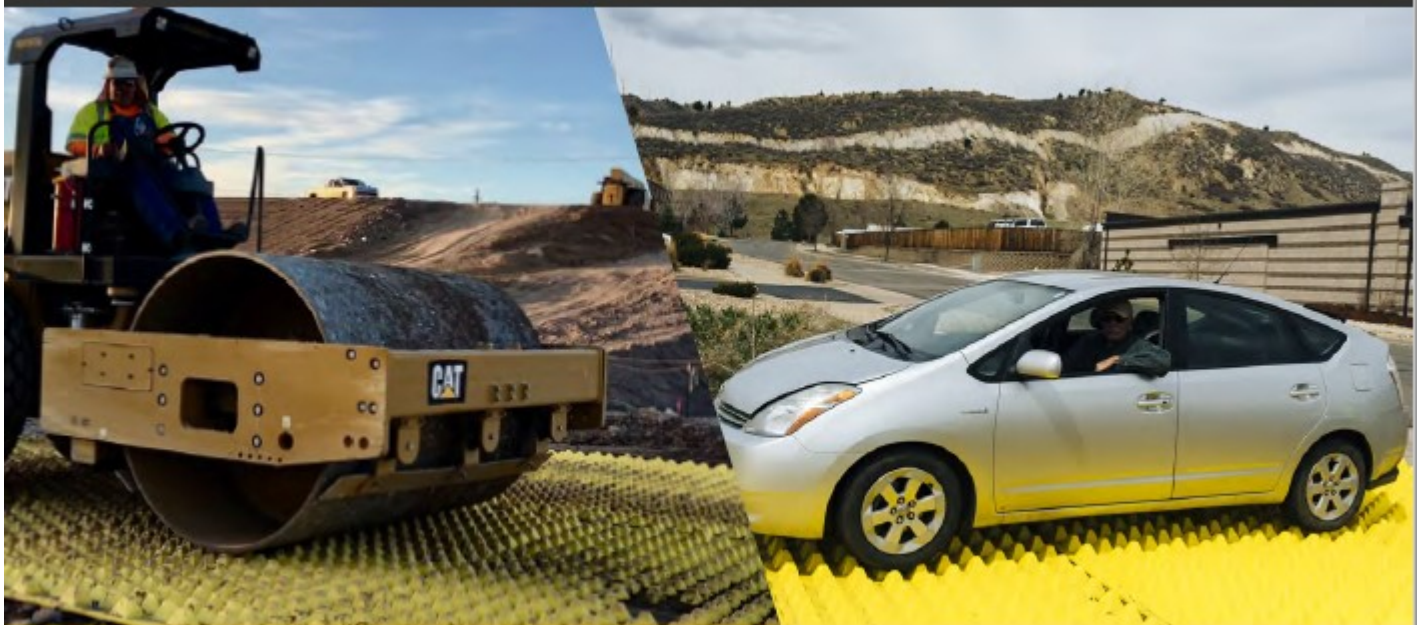
| | FODS | ROCKS | |
|-------------------------------------|------|-------|--|
| Becomes Clogged | No | Yes | |
| 100% Solid and uniform construction | Yes | No | |
| Recyclable | Yes | No | |
| Easily Cleaned | Yes | No | |
| Reusable/Transportable | Yes | No | |
| Absorbs chemicals and oils | No | Yes | |
| Protects ground underneath | Yes | No | |
| Supports 60,000 PSF | Yes | Yes | |
| Easily seen from street | Yes | No | |
| Made in USA | Yes | Yes | |
| Spans over uneven ground | Yes | Yes | |
| Disturbs ground when installed | No | Yes | |
| Shakes vehicles when crossing over | Yes | No | |
| | | | |



FODS mats are 100% recyclable, made in the USA, and can be reused for many years. Once cleaned off they do not transport contaminants to other sites. Mountainsides and hillsides are saved from being blasted from rock. FODS mats at end of use will not end up in landfills like rocks and similar methods. The ground is undisturbed while mats are being used, keeping soils in place from erosion. Each entrance installed with FODS will save 3 dump trucks worth of rock on initial install.

Ideal for construction, airports, government, military, oil and gas, roads and bridges, renewable energy, telecommunications, national parks, storm water, pipeline, utilities, mining, agriculture and more.

FODS TRACKOUT CONTROL



- Mat size is 12' wide by 7' long and pyramids are 3" tall
- Mats are connected together using hardware to achieve the required size to meet local jurisdictions specifications
- Mats weigh approx. 430 lbs.
- Mats can be anchored to asphalt, concrete, or directly to the dirt substrate
- Mats are made out of HMWPE (High Molecular Weight Polyethylene)
- Mats are FODS Yellow in Color

STABILIZED CONSTRUCTION ENTRANCE (SCE)

12' wide by 70' long of appropriate aggregate. Location where SCE is to be located needs to be excavated 6" down in depth, a geotextile erosion control fabric placed down, with aggregate placed on top.

Individual jurisdictions have specifications that they require which can increase or decrease depth, width, length, size of aggregate, and similar. After SCE removal, topsoil must be added back to disturbed area, graded and re-seeded.



Waldo Bros. Company

MA: 617-445-3000

CT: 860-289-9500

*Servicing The New England Construction Industry
Since 1869*